

FY serial screen user guide

Directory

One、FY HMI software.....	1
1.1 、Environmental requirements for installation.....	1
1.2 、Software Installation.....	1
1.3、Introduction to the main software interface and the establishment of the first project...	3
Two、Serial screen and PC online communication.....	6
2.1、Hardware connection.....	6
2.2、Power on the device	7
2.3、Online communication and simulation operation.....	8
2.4、Project download.....	10
Three、Other	12
3.1、Start interface quick link.....	12
3.2、Product selection table.....	0

One、FY HMI software

1.1 、 Environmental requirements for installation

The software is suitable for WIN7/WIN8/WIN10 32-bit and 64-bit systems, and the disk space requirement is more than 10M. Before installing this software, please confirm that the .NET Framework 4.0 patch is installed on the computer. If the patch is not installed on this machine, please install the .NET Framework 4.0 patch before installing the software.

1.2 、 Software Installation

1. Visit the official website of Feiyi Technology to download FY HMI software。 [download](#)
2. start installation. Unzip the downloaded zip file to get FY HMI.exe, double-click FY HMI.exe to start installing the software. The welcome screen is shown in Figure 1-1:

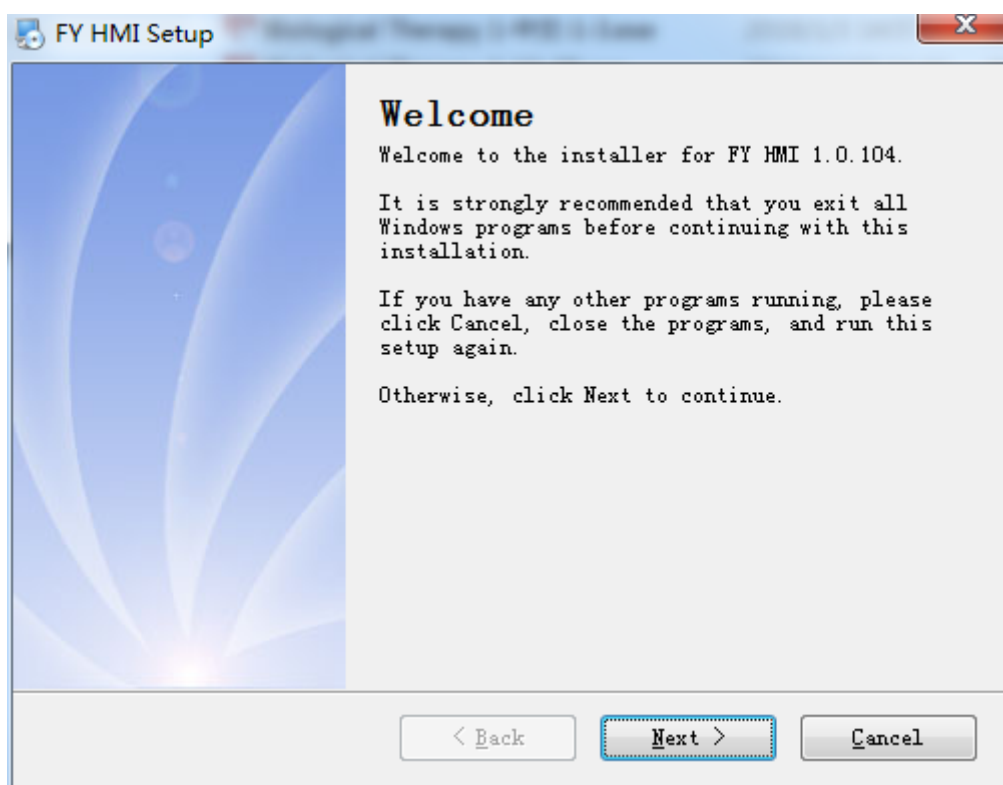


Figure 1-1

Click Next to proceed with the installation and select the default installation path until the installation

is complete. If you are prompted to install the USB driver during the installation process, select “Always install”. If you use your own USB to serial interface device, please download the driver and install it yourself.

3.After the installation is complete, automatically add software shortcuts on the desktop, click to display the software interface, as shown in Figure 1-2:

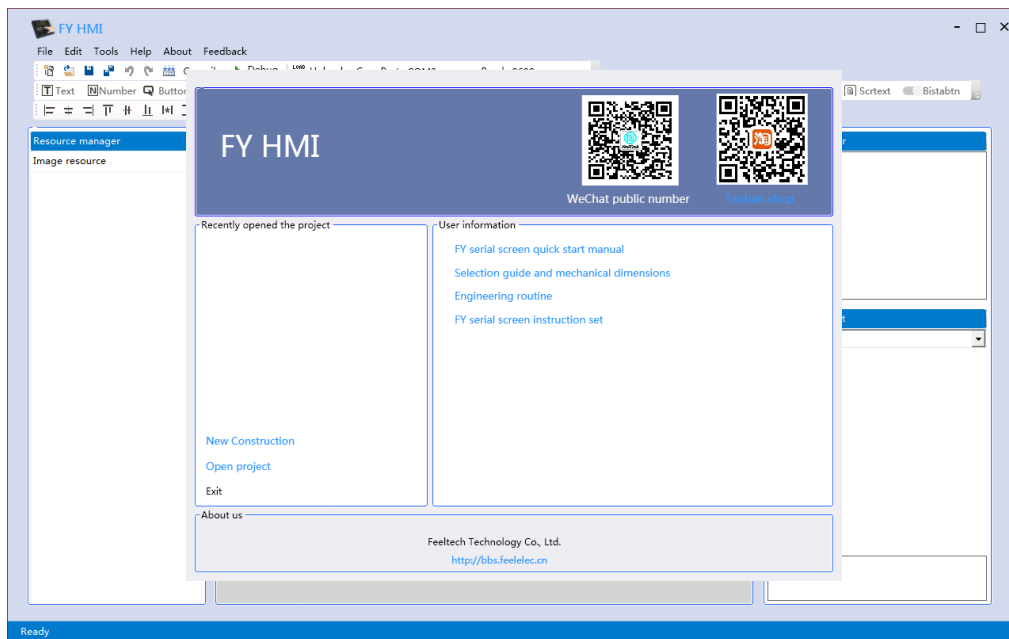


Figure 1-2

1.3、 Introduction to the main software interface and the establishment of the first project

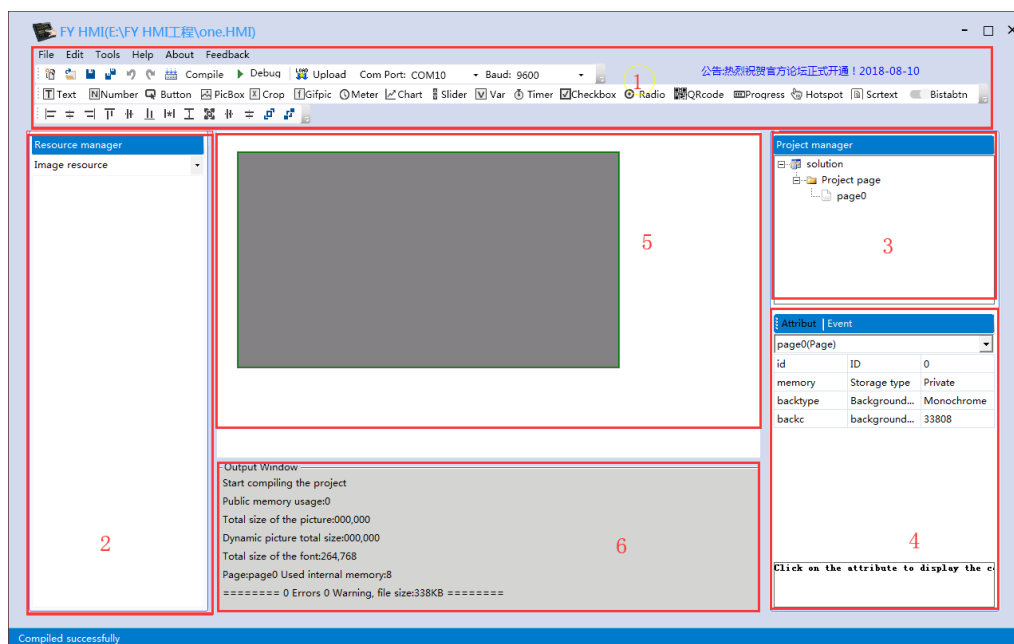


Figure 1-3

1. The main components of the main interface of the software

- 1) Navigation bar: consists of four toolbars;
- 2) Resource manager: consists of picture resources, animation resources, and font resources (select different resources through the drop-down menu);
- 3) Project Manager: Display and operate the pages in the project;
- 4) Attribute event box: set and view the attribute value of the control by the attribute, add processing event;
- 5) Layout editing window: display and edit user design interface;
- 6) Output window: compile output information display;

2. Create the first project (take the "FYU43T4827" model as an example)

- 1) First step new project: Click "New Project" on the start interface, as shown in Figure 1-4, select the storage path and name for the project; if the project has been opened to enter the main interface, you can select "File" from the toolbar. "-> "New" way to create a new project.

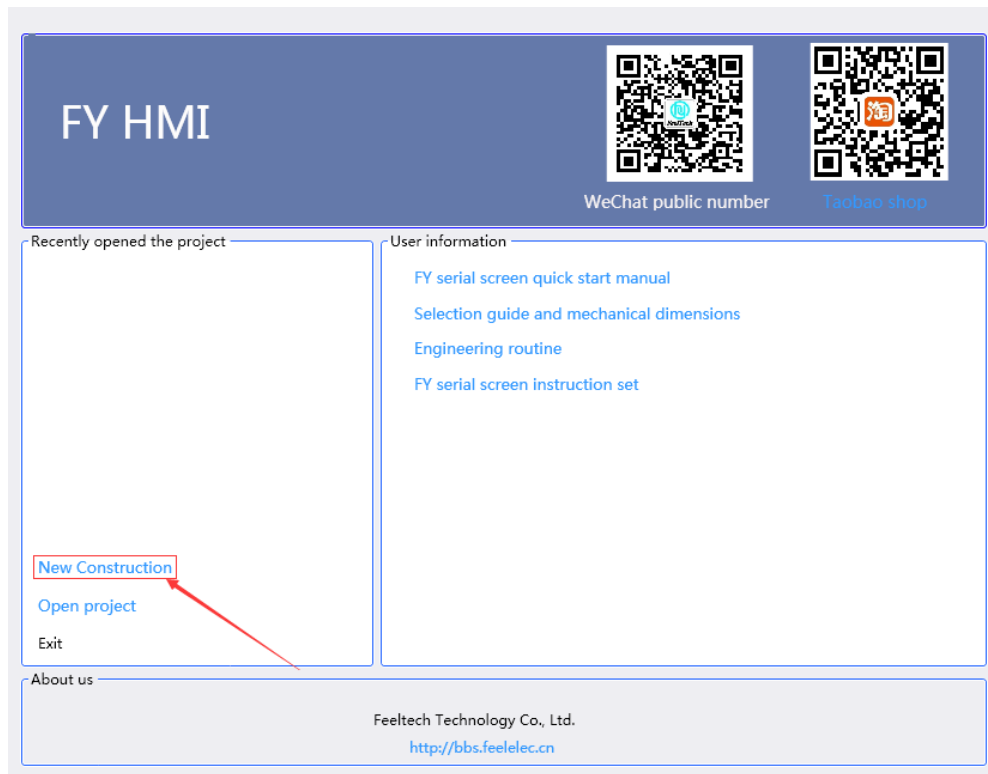


Figure 1-4

2) Step 2: Set the model for the LCD. The model should be the same as the LCD model used. Here, the device series selects “Basic”, the device display is set to landscape, and the model selection is “FYU43T4827”, as shown in Figure 1-5. As shown; click the "confirm" button after the selection is complete. Enter the main interface (**Note: You can select "Tools" -> "Project Configuration" in the toolbar to open the configuration device model interface, modify the device model selected by the project**)

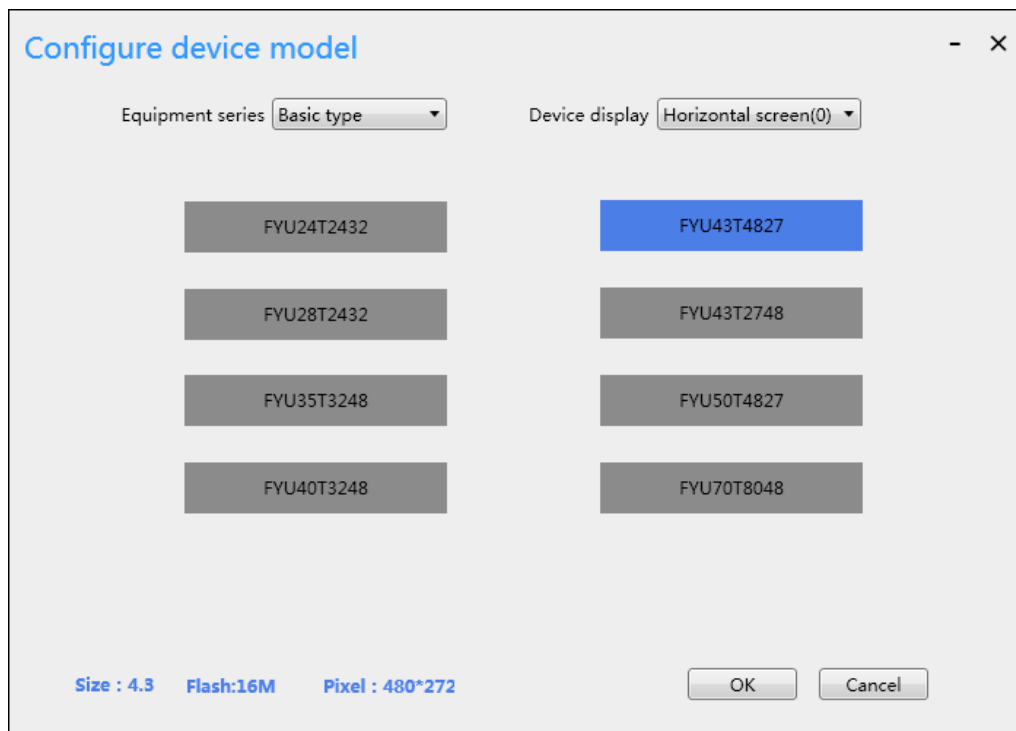


Figure 1-5

3) Step 3: Design the LCD page

- Add a page to the project manager and add the required image resource, font resource, and animation resource in the resource manager; as shown in Figure 1-6.
- Click the control icon or text in the toolbar to add the required controls; as shown in the control toolbar of Figure 1-7;
- Set the attributes and associated events in the attribute event box; please refer to Figure 1-8 and Figure 1-9 for details.

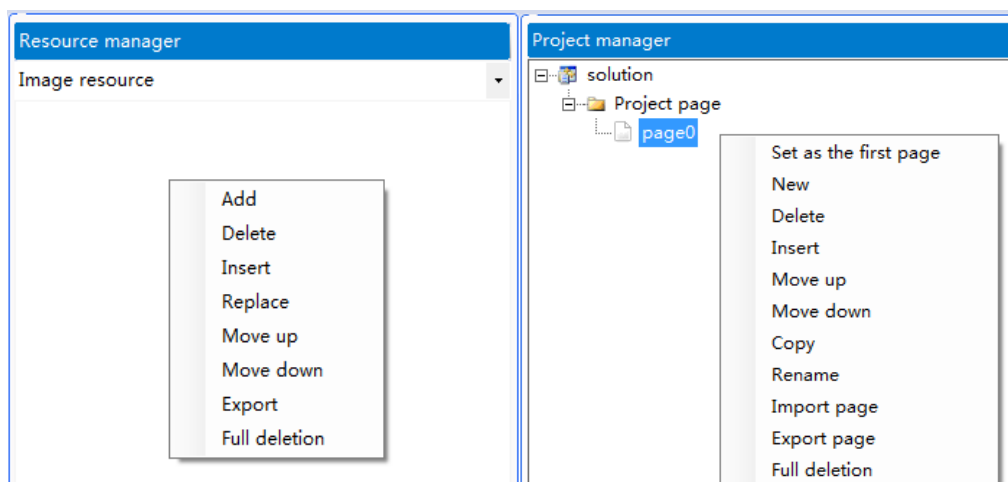


Figure 1-6

Figure 1-7

Attribut Event Attribut, Event Toggle button		
main(Page) Control name		
id	ID	0
memory	Storage type	Private
backtype	Background type	PictureBox
pic	Background picture	0
Control property name attribute meaning attribute value		

Figure 1-8

Attribut Event		
main(Page)		
beforeload	Pre-initial event	
afterload	Post initial event	
down	Press event	
up	Bouncing event	
Event name Event meaning Event code edit Columns		

Figure 1-9

4) Step 4: Save the project

Two、 Serial screen and PC online communication

2.1、 Hardware connection

Connect the LCD screen to the computer through USB-TTL. The connection mode is shown in Figure 2-1. The serial port of the module is TTL level 232 port. The power supply voltage is 5V. The power supply current is 1A.

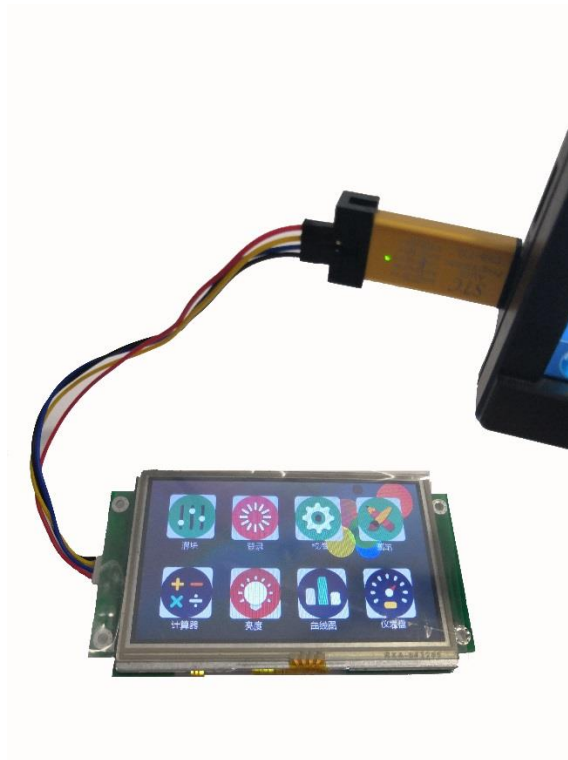


Figure 2-1

2.2、Power on the device

After power-on, the serial port screen displays the factory engineering interface, as shown in Figure 2-2:



Figure 2-2

2.3、Online communication and simulation operation

1. The first step of compiling the file: compile the open project file (click the "Compile" button in the navigation bar), and the compilation result is displayed in the output window;
2. The second step is to open the debugging interface: Click the "Start Debugging" button to enter the debugging window, where the LCD screen can be simulated. As shown in Figure 2-3:

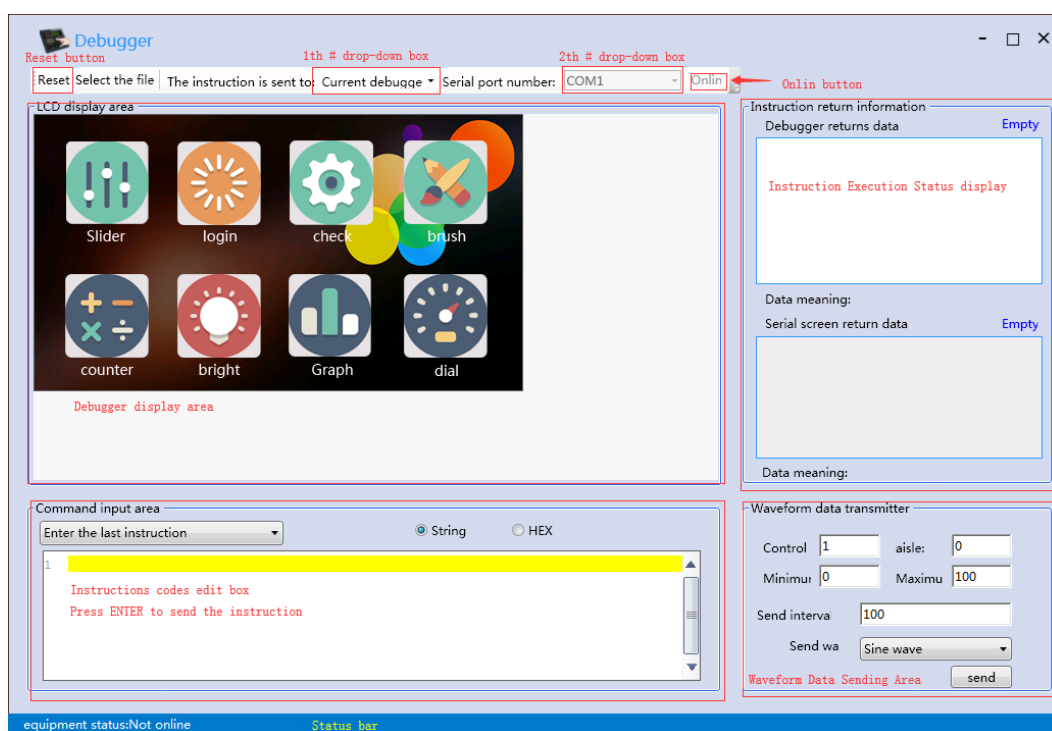


Figure 2-3

3. The third step is to connect the device: No. 1 drop-down box (the drop-down box has three options: 1. current simulator, 2. local serial port, emulator and serial port) set to "native serial port" or "emulator" and The serial port can be connected to the hardware device. The number 2 drop-down box is set to the corresponding serial port number. After the setting is completed, click the link; the connection status will be displayed at the bottom of the observation window.
 - 1) Displayed when the connection is successful:

Online success! Serial port number:COM10, the current baud rate of the device:9600,Equipment model:FYU43T4827,Flash capacity:16777216(16MB)
 - 2) Displayed when the connection fails:

Online failure!Forced interruption!
4. The fourth step is to operate the LCD screen by command operation:

- 1) Mode 1 FYHMI debugging interface operation: After the debugging interface is online successfully, you can enter the command at the command input window and press Enter to execute the command; the simulator execution effect is shown in Figure 2-4; the LCD device execution effect is shown in Figure 2-5 is shown;

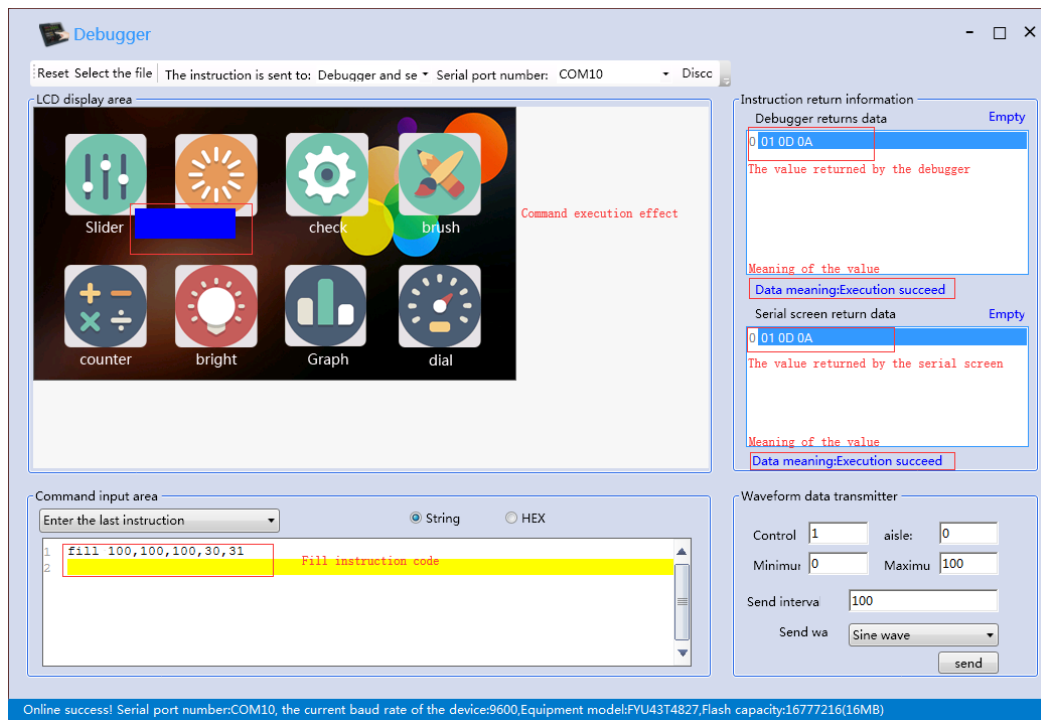


Figure 2-4



Figure 2-5

- 2) Mode 2 Universal serial port assistant operation (Note: Please make sure that the serial port number and baud rate used are correct, the default baud rate is 9600):

When using the general-purpose serial port assistant, set the serial port number and baud rate to be the same as the LCD screen. Since the command terminator is "0x0D 0x0A" two bytes, you need to ensure that the serial port assistant can automatically add "0x0D 0x0A". When using the serial port assistant shown in Figure 2-6, you need to check "Send new line" and check "HEX display"; the LCD screen display effect is shown in Figure 2-5.



Figure 2-6

2.4、Project download

After the hardware connection is successful, the compiled project file is downloaded to the hardware device for running, and the serial port online download and the TF/SD card offline download are supported.

1. Serial port download(At this time, the SD card slot cannot be inserted):

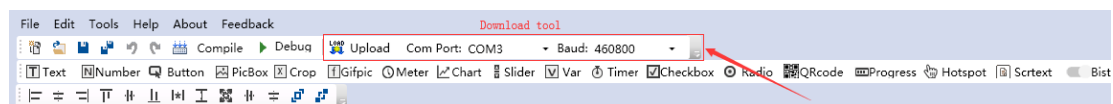


Figure 2-7

- 1) Set the serial port number and baud rate at the toolbar position as shown in Figure 2-7 ;

- 2) Click the download button to start downloading the project to the device; during the download process, the download information is displayed at the bottom of the form, as shown in the figure:

a) before downloading : Try to go onlineCOM3:9600

b) during the download process :

File size:162491 Downloaded:20480 download speed:10240 Estimated time remaining:13second

c) After the download is complete : Download completed! Total time:0hour0minute4second

2. TF/SDcard download(Recommended, faster update) :

In the toolbar, choose File -> Compile Folder. As shown in Figure 2-8, open the directory where the .tft file is located, as shown in Figure 5-9. Select the required .tft file and copy it to TF. /SD card. (Note: There can only be one ".tft" file in TF/SD, and the file name cannot contain special symbols)

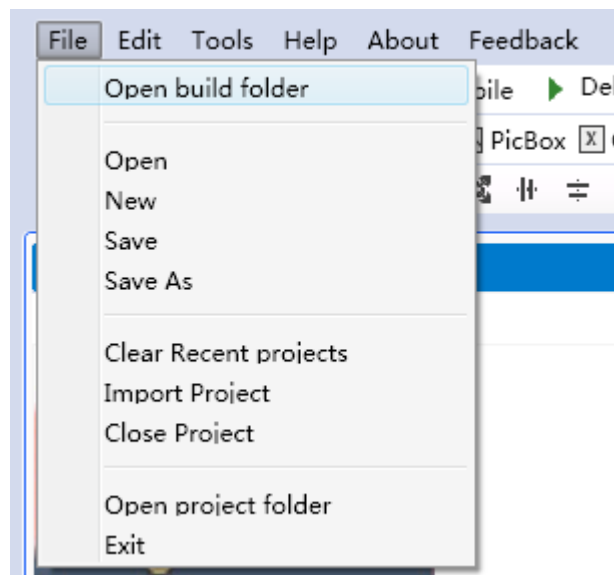


Figure 2-8

名称	修改日期	类型	大小
480272.tft	2018/8/27 9:46	TFT文件	1,427 KB
suanfa.tft	2018/8/25 16:30	TFT文件	339 KB

Figure 2-9

Three、 Other

3.1、 Start interface quick link

The interface is mainly composed of 3 parts:

1. Open the project recently: Open the software, start the interface to display the most recent project, right click on the project name, and quickly open the project;
2. User common data: including "FY serial screen quick start manual", "selection guide and mechanical dimension drawing", "material case", "FY serial screen instruction set", left click to open local file (make sure the installation directory exists) This file); to view the most recent data, select "Help" -> "User Data Download" in the toolbar to download the latest information.
3. About Us: You can scan our QR code to follow our WeChat public account or Taobao store, or click on the link to go directly to our Taobao store or official website;

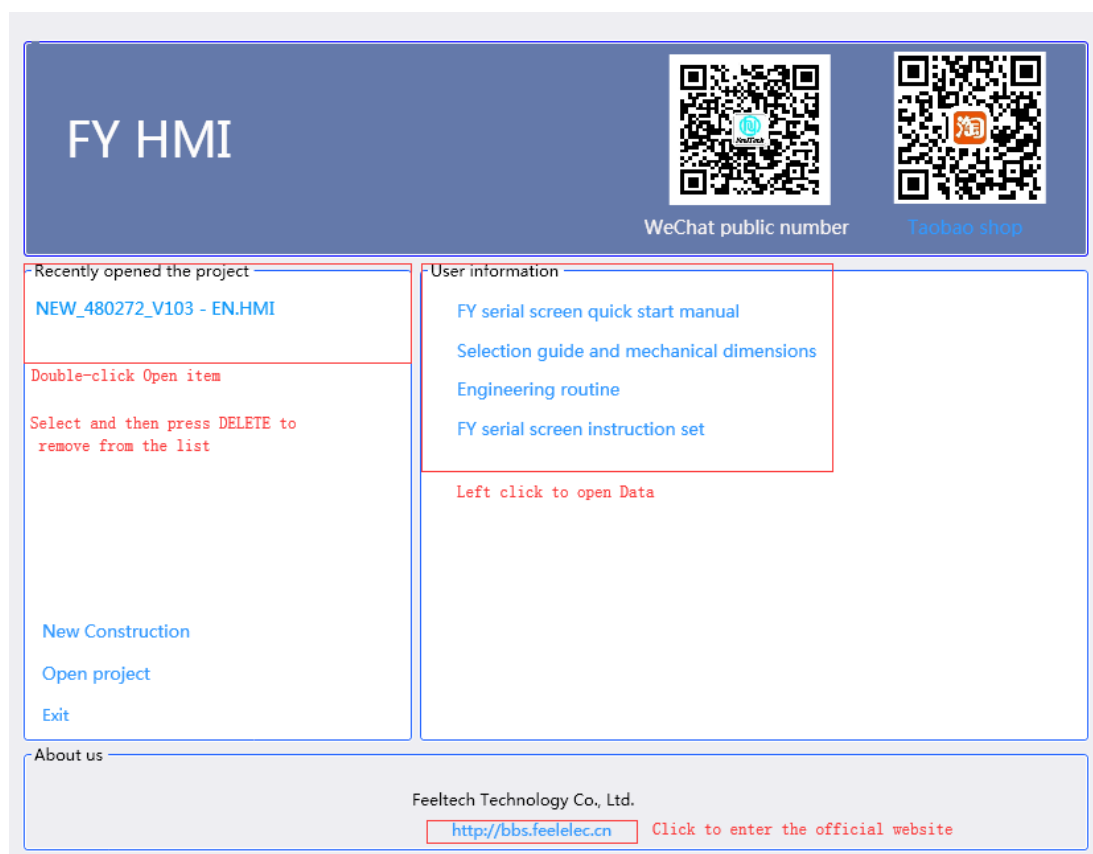


Figure 3-1

3.2、Product selection table

size	proportion	model	Effective display size	color	distinguishability	BRT (cd/m²)	Operating Voltage (V)	Working current (mA)	SLEEP mode (mA)	Operating temperature (°C)	FLASH storage	Serial command buffer	Main frequency
2.4	4:3	FYU24T2432	48.96*36.72	65K	320*240	280	4.75-6	100mA 5V	35mA 5V	-20/+70	4MB	1024BYTE	72M
2.8	4:3	FYU28T2432	57.6*43.2	65K	320*240	280	4.75-6	150mA 5V	35mA 5V	-20/+70	4MB	1024 BYTE	72M
3.5	4:3	FYU32T4832	73.44*48.96	65K	480*320	280	4.75-6	18mA 5V	35mA 5V	-20/+70	16MB	1024 BYTE	72M
4.0	4:3	FYU40T4832	73.44*48.96	65K	480*320	280	4.75-6	18mA 5V	35mA 5V	-20/+70	16MB	1024 BYTE	72M
4.3	16:9	FYU43T4827	95.04*53.86	65K	480*272	280	4.75-6	200mA 5V	35mA 5V	-20/+70	16MB	1024 BYTE	72M
4.3	16:9	FYU43T2748	95.04*53.86	65K	480*272	280	4.75-6	200mA 5V	35mA 5V	-20/+70	16MB	1024 BYTE	72M
5.0	16:9	FYU50T4827	108*64.8	65K	480*272	280	4.75-6	250mA 5V	40mA 5V	-20/+70	16MB	1024 BYTE	108M
7.0	16:9	FYU70T8048	154.08*85.92	65K	800*480	280	4.75-6	400mA 5V	40mA 5V	-20/+70	16MB	1024 BYTE	108M
